





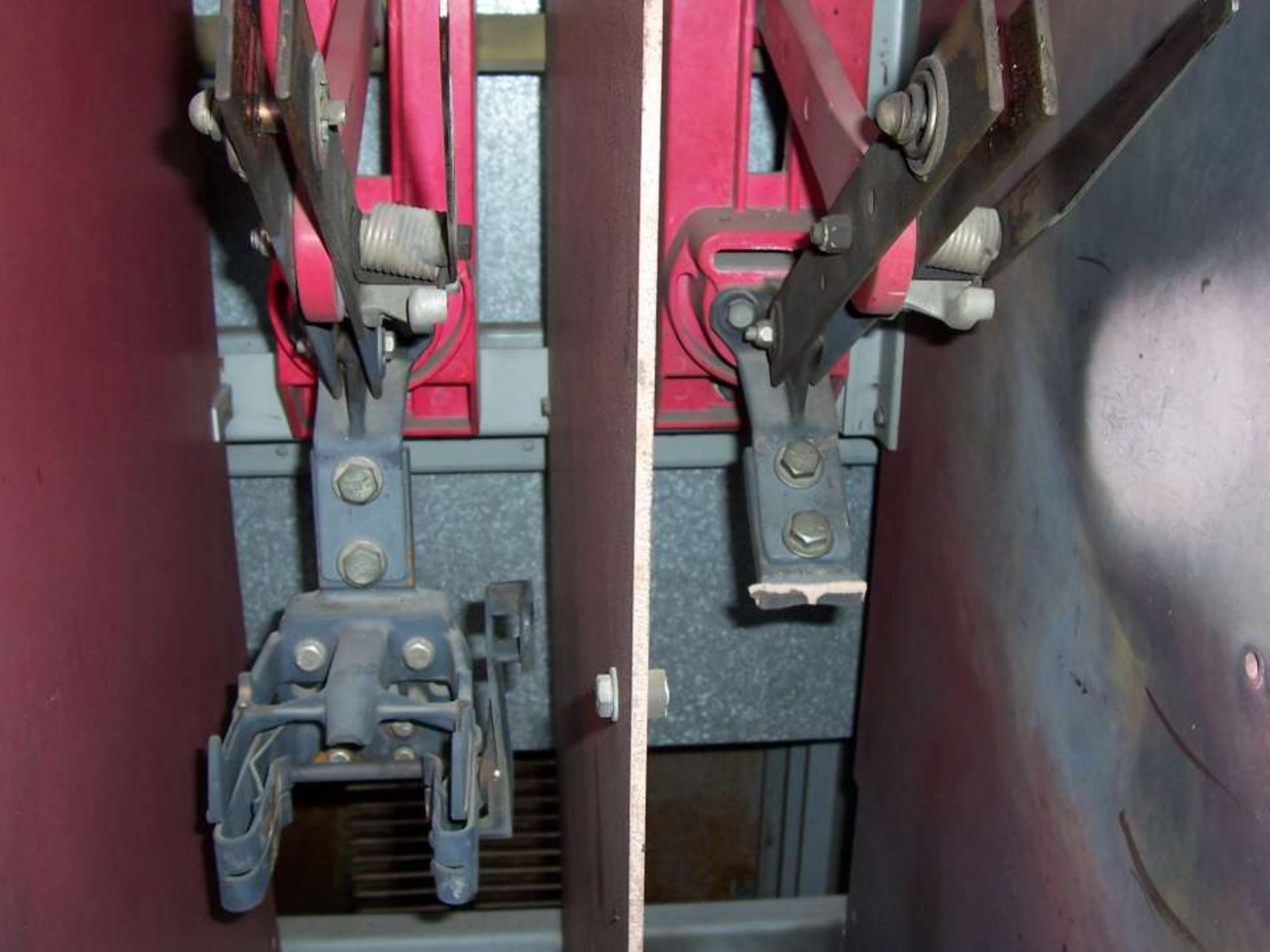
CLOSED

CRASH INVESTIGATION REPORT
DATE: 10/15/2011
TIME: 14:30
LOCATION: 101st St, New York, NY
FLIGHT NO: N12345
REGISTRATION: N12345
PILOT: J. Doe
CARRIER: Delta Air Lines
STATUS: 100%
REMARKS: Cabin crew member found in aisle, unresponsive. Medical attention provided. Aircraft landed safely.

BUCK UP
BUCK UP

CLOSED



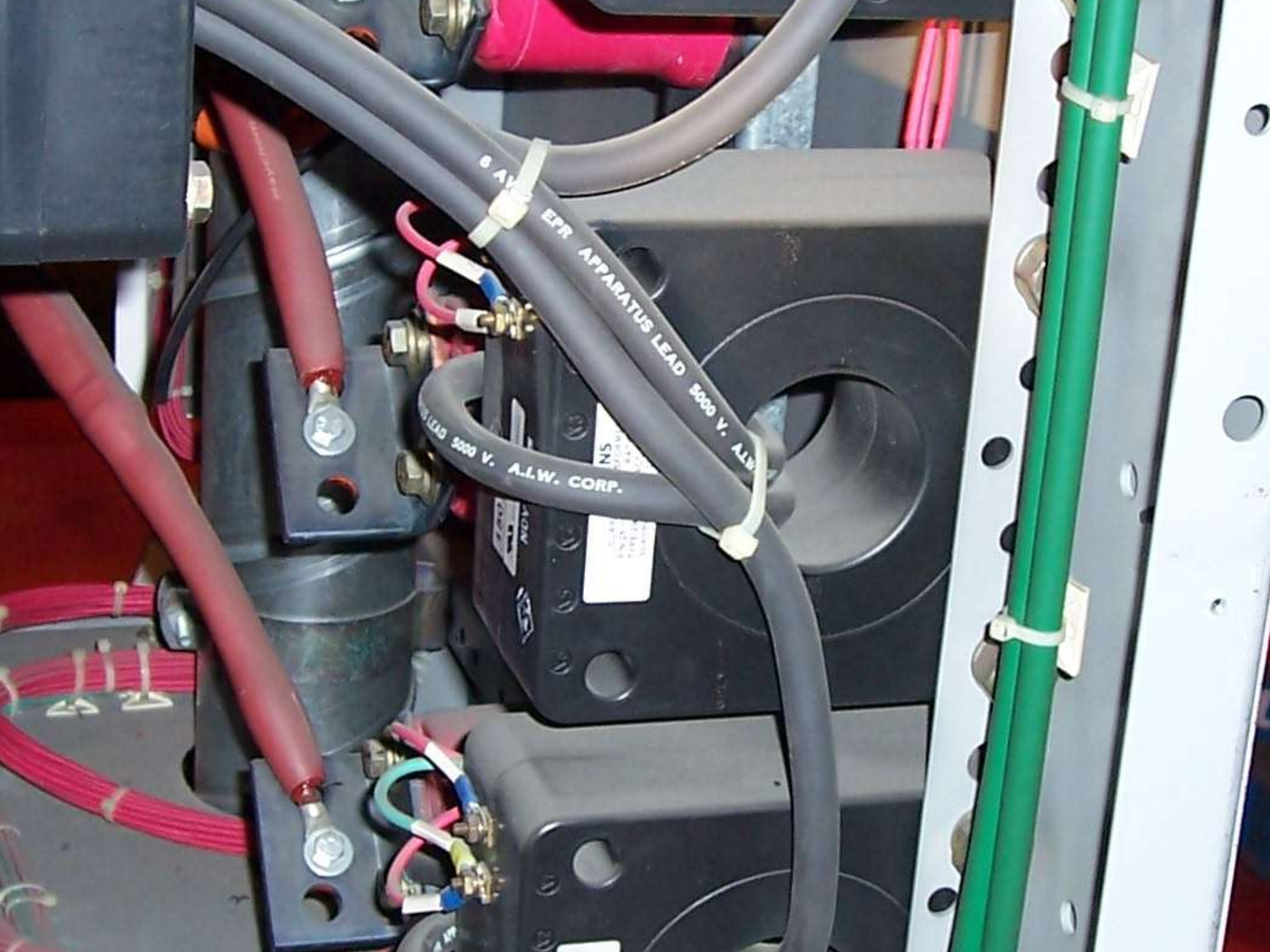












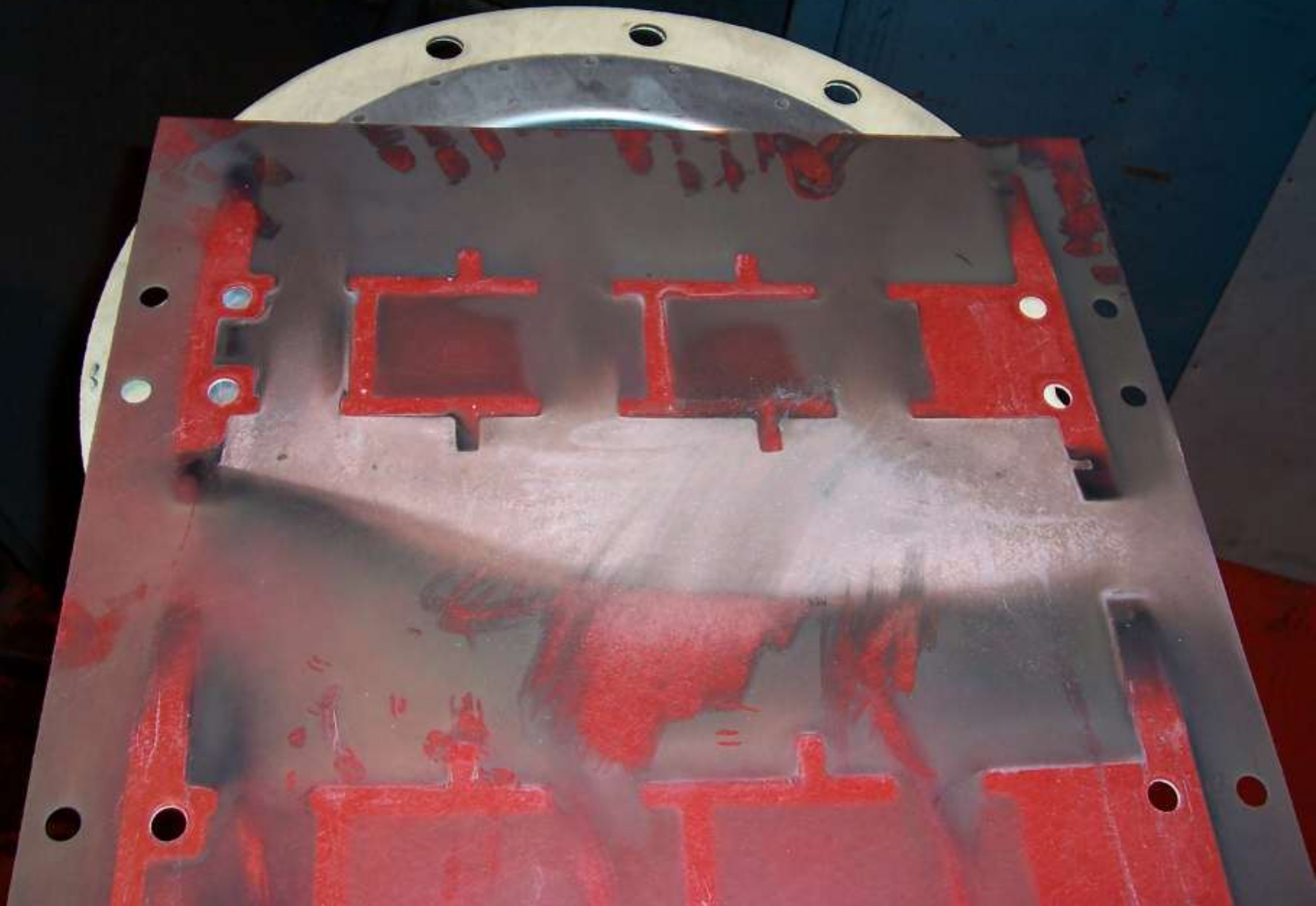
6 AWG
EPR APPARATUS LEAD 5000 V. A.L.W. CORP.

5000 V. A.L.W. CORP.

NS
A.L.W. CORP.
MAY 1968
MAY 1968

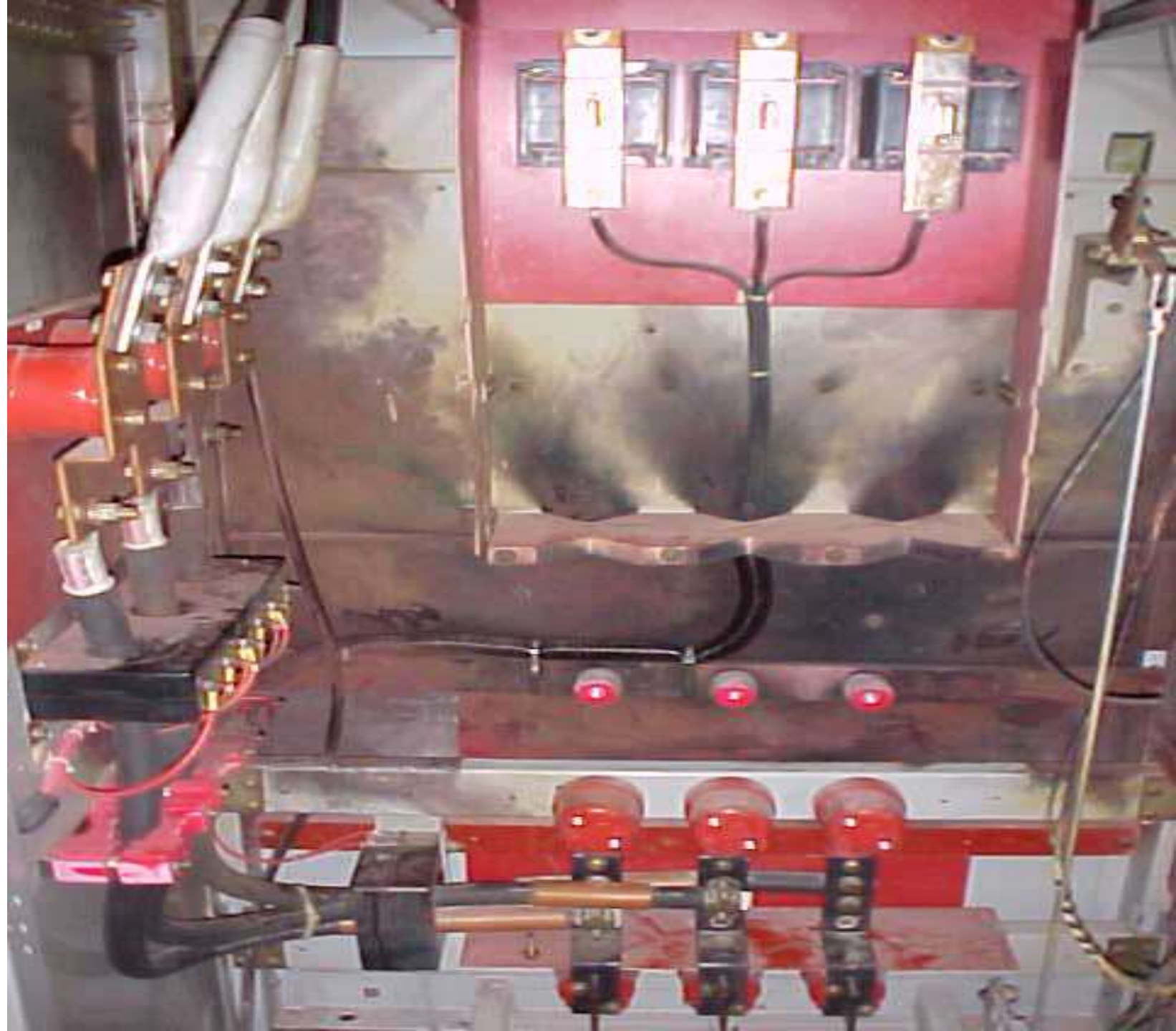
NS
A.L.W. CORP.
MAY 1968
MAY 1968

NS
A.L.W. CORP.
MAY 1968
MAY 1968



























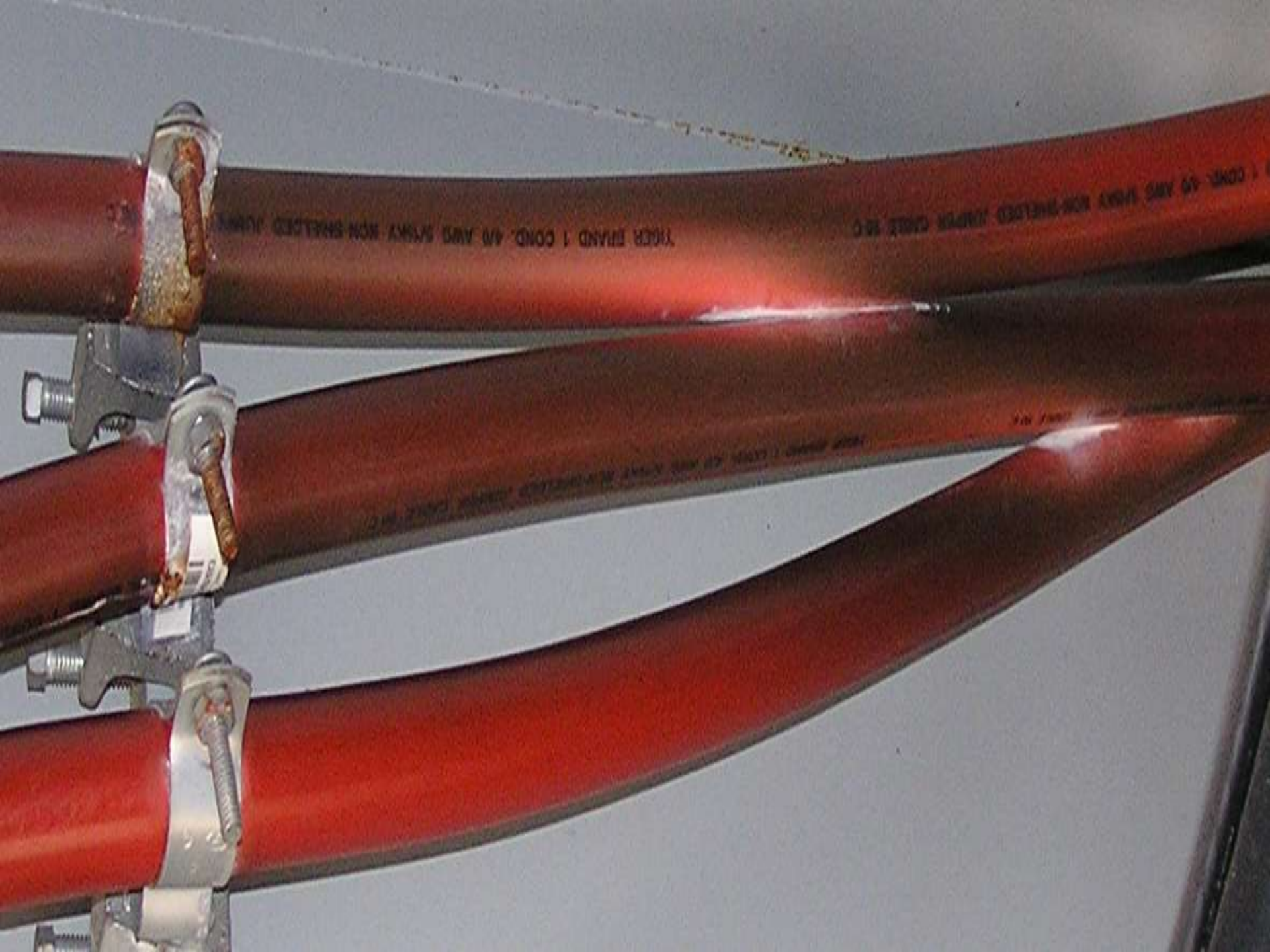




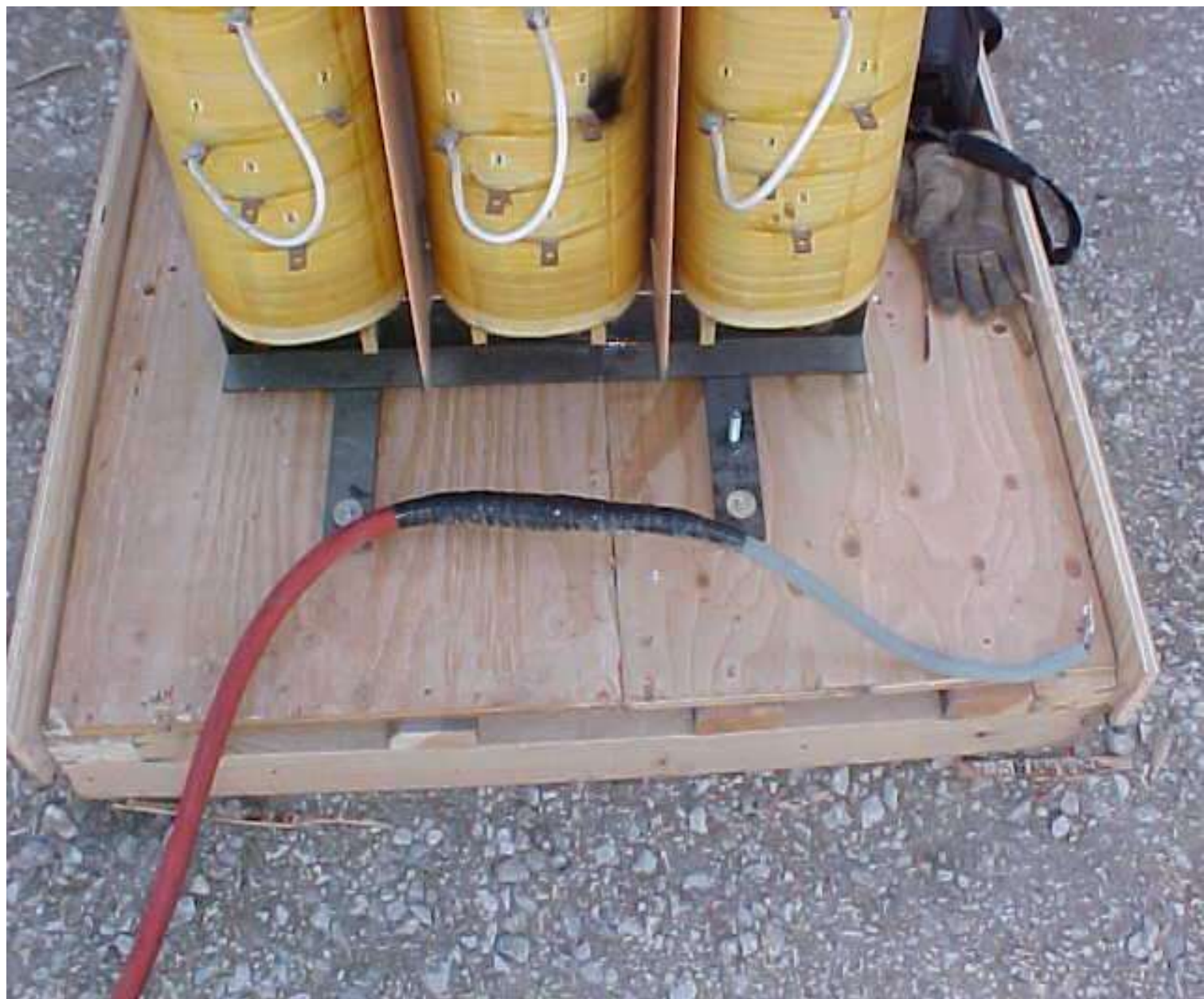














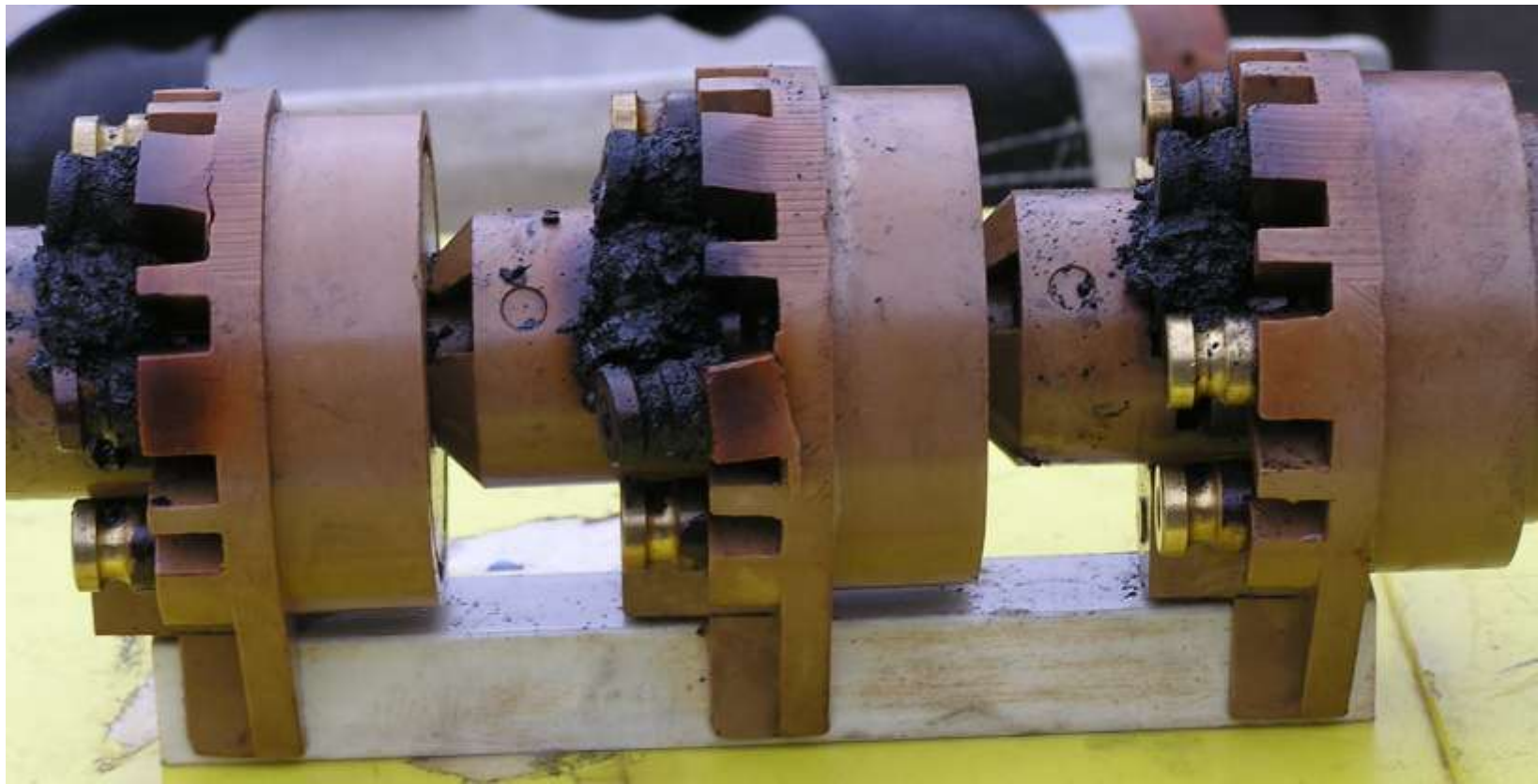
FM

H3

LUFKIN 12 FT
WHITE CLAD TAPE

W9212









HEAT

DAMAGED

IN USE



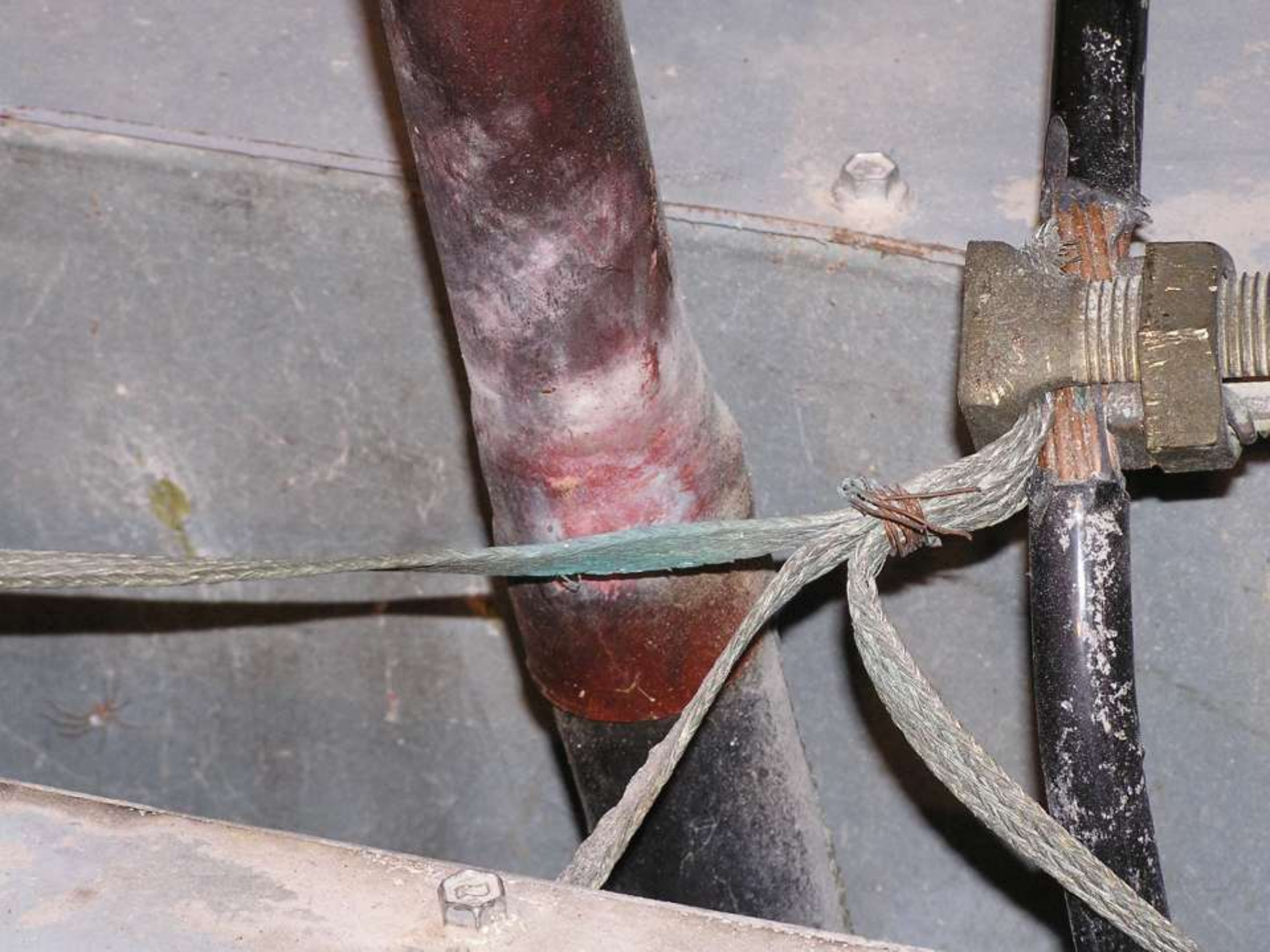








S&C SNUFFLER
FOR USE WITH SM-65 HOLDERS



WARNING
REATTACH THIS BRACKET AFTER ACCESS TO PREVENT DOOR FROM HANGING ACCIDENTAL
CONTACT WITH LIVE PARTS. FAILURE TO DO SO CAN CAUSE SEVERE INJURY OR DEATH







A

B

C

WARNING

CLOSED

D
HIGH



WARNING

es

DANGER

VOLTAGE

OUT









16
16
16

16
16
16

16
16
16





